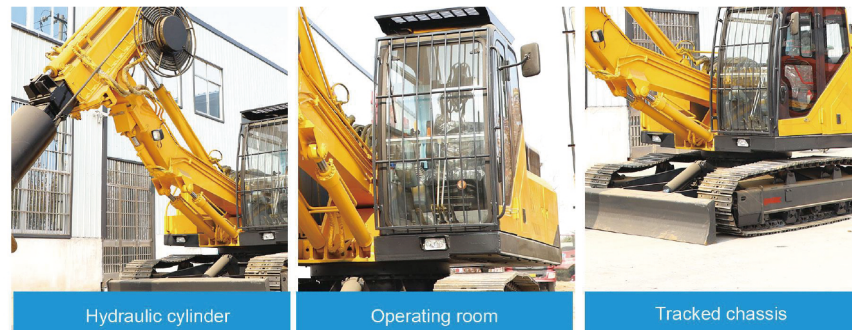


## CRAWLER ROTARY DRILLING RIG

Rotary drilling rig is a kind of piling machinery suitable for hole-making operations in building foundation engineering. It features in small rotating radius and large torque. The hydraulic...plunger pump, which is characterized by large flow, low noise and long life. The power motor features in large torque and fast drilling speed. The drilling operation is carried out by virtue of pressurization and downward movement by making use of its own weight, which is fast and efficient. It is mainly suitable for the construction in various soil layers such as sandy soil, clay, and silty soil, and some stratum containing pebbles and gravel. It is widely used in the construction of various foundations, such as cast-in-place piles, continuous walls, and foundation reinforcement.



### FEATURES:

Rotary drilling rig has the advantages of high flexibility and maneuverability, small tonnage, simple operation, high stability, ultra-fast piling speed, fast movement, convenience in relocation, cost-effectiveness; it features in heavy-duty and reinforced frame and body as well as the reinforced boom. It will not be deformed for life. Despite the compact structure, it is capable of large diameter pile holes boring. It is widely used in the construction of bored piles for urban high-rise buildings, railways, highways, bridges, airports, ports and other pile foundation projects. It has the advantages of wide application, high construction efficiency, stable performance, considerate service, environmental protection and energy saving.

### Main technical parameters

Dimensions (mm)	11000/2400/3100
Vehicle mass (kg)	17000
Drilling depth (m)	22
Drilling diameter (mm)	600-2000
Rotation angle(°)	360
Walking speed (km/h)	5-8
Working pressure of the hydraulic system (mpa)	20-25
Displacement of the hydraulic system (ml/r)	63/63
engine model	weichai6105ZLY4
Rated power of the engine (kw)	120
Gear pump model	CBGT 2063/63